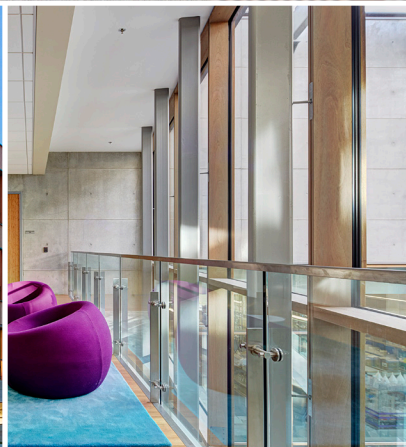


Timber Curtain Wall System



- Alternative to standard aluminum storefront/curtain wall systems
- Structural wood mullions on the interior, low-maintenance aluminum caps or wood caps on the exterior
- Ideal system for high-end residential, boutique retail and hospitality projects
- Nearly unlimited configurations with multiple glazing, mullion species and cap options
- Various installation options allow for curtain walls to span multiple stories and incorporate into any building system
- A turn key, tested solution: all systems can be sold with third-party engineering and installation to ensure proper performance

Timber Curtain Wall System Product Parameters

**All parameters are subject to project specifications and engineering review*

Timber Curtain Wall

Max System Height	30' (Or more if spanning multiple floors)
Max System Width	Unlimited
System Depth	Based on wind load/structural criteria
System Thickness	56mm (2 3/16")
Integrated Venting Units	Any window or door (Swing, sliding, folding, etc.)
Radius Options	Segmented radius in angles of 1°-45° from the glass

Timber Curtain Wall Lite

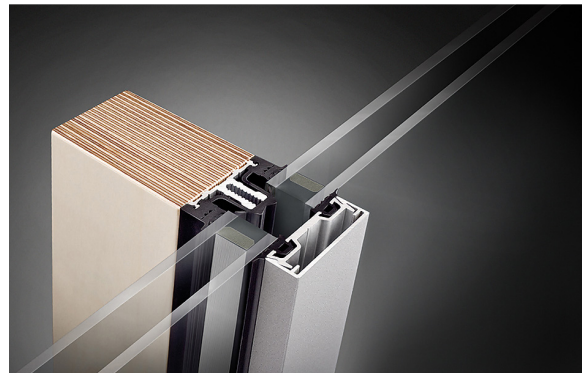
Max System Height	10' (Or more with multiple mullioned systems)
Max System Width	20' (Or more with field-glazed or multiple mullioned systems)
System Depth	Based on wind load/structural criteria
System Thickness	45mm (1 3/4") perimeter mullions 54mm (2 1/8") common mullions
Integrated Venting Units	Any window or door (Swing, sliding, folding, etc.)
Radius Options	N/A

Technical Overview

The standard **Timber Curtain Wall** system consists of a non load-bearing structural wood interior with a triple layer of interior gaskets and precise inner sealing channel, supplied by **RAICO**. The base profile wood is fixed with a direct screw connection. A variety of exterior caps are available, which also assist to channel water away from the glazed openings.

The interior wood components are 56mm (2 3/16") in thickness, with a variable depth depending on the structural needs of each opening. A structural core is used for stability and consistency in the interior wood components with 1/4" veneer standard in a variety of wood species. Vertical and horizontal lengths can be configured to create nearly any desired combination and span multiple stories. Angled corners and segmented radius systems are also available.

The **Timber Curtain Wall Lite** is a cost-effective, elegant solution for less complex, single story applications. With narrow face dimensions of 45mm (1 3/4") at the perimeter and 54mm (2 1/8") at the common mullions, this system is perfect for most residential applications. Based on the overall size of the opening and depending on structural limitations, the system can either be shipped pre-assembled for ease of installation, multiple pre-glazed systems can be mullioned together, or multiple systems can be field-glazed to preserve common sight-lines.



Convenient and Customizable Options

Interior wood mullion options include:

- Custom wood species
- Solid engineered lumber (LVL, PSL, etc.)
- Lamboo® (Engineered bamboo)
- Custom pre-finishes available

Standard glazing options include:

- Curtain walls can be glazed with nearly any type of glass or panel including single, double or triple-glazed units. Glazing thickness must be consistent throughout the elevation. Corner or bent glass also available.

Exterior cap options include:

- Wood cap (Custom pre-finish available)
- Aluminum cap (Custom Kynar™ or clear/bronze anodized finish)
- No cap (Standard Timber Curtain Wall only)

Other options:

- Exterior louvers, motorized operables, switch glass, integrated millwork and curved/shaped wood interiors

RAICO

The Professionals' Profile.



Contact Reveal Windows & Doors by Pacific Architectural Millwork for additional options and customization.

M-Series Windows



The M-Series is a premium line of European-style windows, designed for the U.S. market with features such as integrated metal nail fins for ease of installation. This suite provides consistent sight-lines and includes unique configurations such as the Stacked Awning and Tradewinds Casement, all with out-swing operation.

M-Series windows are available in all wood (W6400) or wood with exterior aluminum cladding (WA7000). Options for customization include wood species, glazing, hardware finish, Timber Curtain Wall integration and accessories like concealed roll screens.

For a more contemporary appearance, the Narrow M-Series line with ultra slim sight-lines ($2\frac{1}{8}$ ") is available.

M-Series Product Line

Choose all wood (W6400) or wood with exterior aluminum cladding (WA7000)

- M-Series Casement Window
- M-Series French Casement Window
- M-Series Tradewinds Casement Window
- M-Series Awning Window
- M-Series Stacked Awning Window
- M-Series Fixed Window

M-Series WA7000 Casement Parameters

Contact us for details on other M-Series products and configurations

Max Frame Width	36"
Max Frame Height	78"
Min Frame Width	16"
Min Frame Height	20"
Stile/Rail Width	3" Standard M-Series (WA7000) 2 1/8" Narrow M-Series (WA7000N)
Min Jamb Depth	2 13/16" (From back of nail fin) 5 5/16" (With optional roll screen)
Edge Detail	Exterior: Contemporary Interior: Traditional or contemporary
Hardware Finishes	Satin Nickel Oil-Rubbed Bronze Custom finishes available
Exterior Aluminum Finishes	Custom color-matched Kynar™ (Standard) Clear/Bronze Anodized

Convenient and Customizable Options

Handle options include:

- Verona (Standard M-Series)
- 47100 (Narrow M-Series)
- Custom handles available



Verona



47100

Standard wood species include:

- Pine
- Vertical Grain Douglas Fir
- Sapele Mahogany
- Custom wood species and factory pre-finishes available

Standard glazing options include:

- 1" Overall tempered, Low-E insulated glass for W6400 wood windows
- 1 1/8" Overall tempered, Low-E insulated glass for WA7000 aluminum-clad windows

Other options:

- Custom glazing including decorative, switch glass, tinted and impact glass available
- Concealed roll screens, custom hardware, jamb extensions, motorized operation, egress hinges and simulated/true divided lites



M-Series
French Casement
Window



M-Series
Stacked Awning
Window



M-Series
Tradewinds Casement
Window

Contact Reveal Windows & Doors by Pacific Architectural Millwork for additional options and customization.

Slide & Seal™ Door System



Patented system slides and seals automatically without the heavy lifting

- Innovative hardware automatically seals door in closed position
- No more bulky, expensive handles needed to operate and seal each panel manually
- Panels disappear flush into pockets
- Adjustable rollers and hardware for ease of service and installation
- Can be fully automated for the ultimate in hands-free convenience
- Durable aluminum exterior with warm wood interior, in your choice of finishes and species

Slide & Seal™ AW6700 Product Parameters

Max Frame Height	144"
Min Panel Height	60"
Min Panel Width	31 1/2"
Max Panel Width	108" (Up to 65 sq. ft. of glass)
Max Opening	30' per side (Larger openings available)
Muntin Width	1 1/4" SDL
Panel Thickness	2 5/8"
Screen Thickness	1 3/4" (Aluminum or wood)
Stile/Rail Width	3 3/4"
Configurations	Fixed, Pocketing, 90° Corner

Convenient and Customizable Options

The Slide & Seal™ door system has been tested for thermal, air, water and structural performance, and comes with a variety of wood species, glazing and hardware options.

Standard wood species include:

- Pine
- Vertical Grain Douglas Fir
- Sapele Mahogany
- Custom species and finishes available

Standard glazing options include:

- 1 1/4" Tempered Low-E insulated glass
- Custom glazing, tinted and impact glass are available

Aluminum finishing options include:

- Custom color-matched Kynar™
- Anodized (Clear or bronze)

Edge detail:

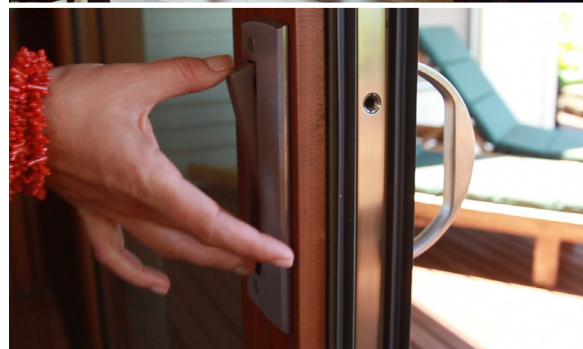
- Exterior aluminum: Contemporary
- Interior wood: Traditional or contemporary

Other options:

- Keyed locks, aluminum or wood screens, and intermediate vertical or horizontal rails
- Track options include stainless steel Flush Track (Standard) and our patented stainless steel Flush Drain Track
- Prep for automation available

Proprietary Recessed D-Handle

- Only one D-Handle per lead panel required to operate entire system
- Handle remains recessed in face of the panel until pivoted into position
- Sand-cast from bronze and available in Satin Nickel or Oil-Rubbed Bronze finish (Custom finishes available)



Contact Reveal Windows & Doors by Pacific Architectural Millwork for additional options and customization.

Slimline Doors



The highly-desirable “warm contemporary” look can now be achieved with the Slimline door by Reveal Windows & Doors. The Slimline combines the richness and thermal performance of solid wood doors with the sleek, minimal sight-lines typically associated with aluminum or steel products.

By increasing the panel thickness to $3\frac{5}{16}$ ”, the stiles and rails can be kept to a mere 3” wide and remain structurally stable in systems up to 10’ high. The European-style Slimline was designed and tested for the U.S. market with features such as integrated metal nail fin for ease of installation.

Add M-Series windows by Reveal Windows & Doors as matching transoms and sidelites, or incorporate the Slimline into a Timber Curtain Wall system as an integrated swing door unit. The Slimline door can be customized with a wide variety of wood species, glazing, hardware and interior/exterior finish options.

Slimline Door Product Line

Choose all wood (W8400) or a wood with exterior aluminum cladding (WA8400)

Slimline Inswing Doors:

- Slimline Standard Inswing Door W8400
- Slimline Standard Inswing Door WA8400
- Slimline Euro Inswing Door WA8400

Slimline Outswing Doors:

- Slimline Outswing Door W8400
- Slimline Outswing Door WA8400

Standard Inswing and Outswing Door Parameters

Max Frame Width	43 ³ / ₄ " Single 86 ³ / ₈ " Double
Max Frame Height	120"
Min Frame Width	20" Single 37 ⁷ / ₈ " Double
Min Frame Height	66"
Panel Thickness	3 ⁵ / ₁₆ "
Stile/Rail Width	3"
Min Jamb Depth	4 ⁹ / ₁₆ " (From back of nail fin)
Edge Detail	Contemporary
Grid Options	⁷ / ₈ ", 1 ¹ / ₄ " SDL 1 ³ / ₄ ", 2 ¹ / ₈ ", 2 ¹ / ₂ " TDL
Exterior Aluminum Finishes	Custom color-matched Kynar™ (Standard) Clear/Bronze Anodized

Convenient and Customizable Options

Panels are pre-hung on brass hinges, in either Oil-Rubbed Bronze or Satin Nickel finish. Single and double door configurations and intermediate vertical or horizontal rails are available.

Handle options include:

- Verona (Satin Nickel, Oil-Rubbed Bronze or Resista Brass finish)
- Custom handles and finishes available

Standard wood species include:

- Pine
- Vertical Grain Douglas Fir
- Sapele Mahogany
- Custom species and factory pre-finishes available

Standard glazing options include:

- 1 ¹/₈" Overall tempered Low-E insulated glass
- Custom glazing including decorative, switch glass, tinted and impact glass available



Verona



Contact Reveal Windows & Doors by Pacific Architectural Millwork for additional options and customization.